



# VAST 2.5

## User Guide

Rev. 2.5

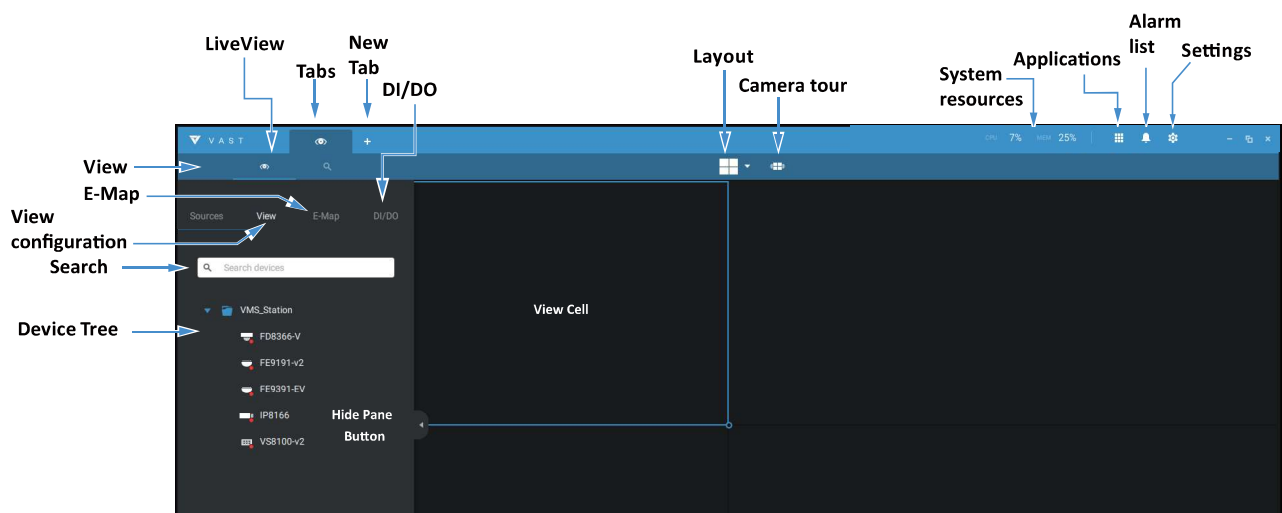
For SW rev. 2.5


# Chapter 1 Basics:

## Control and Elements

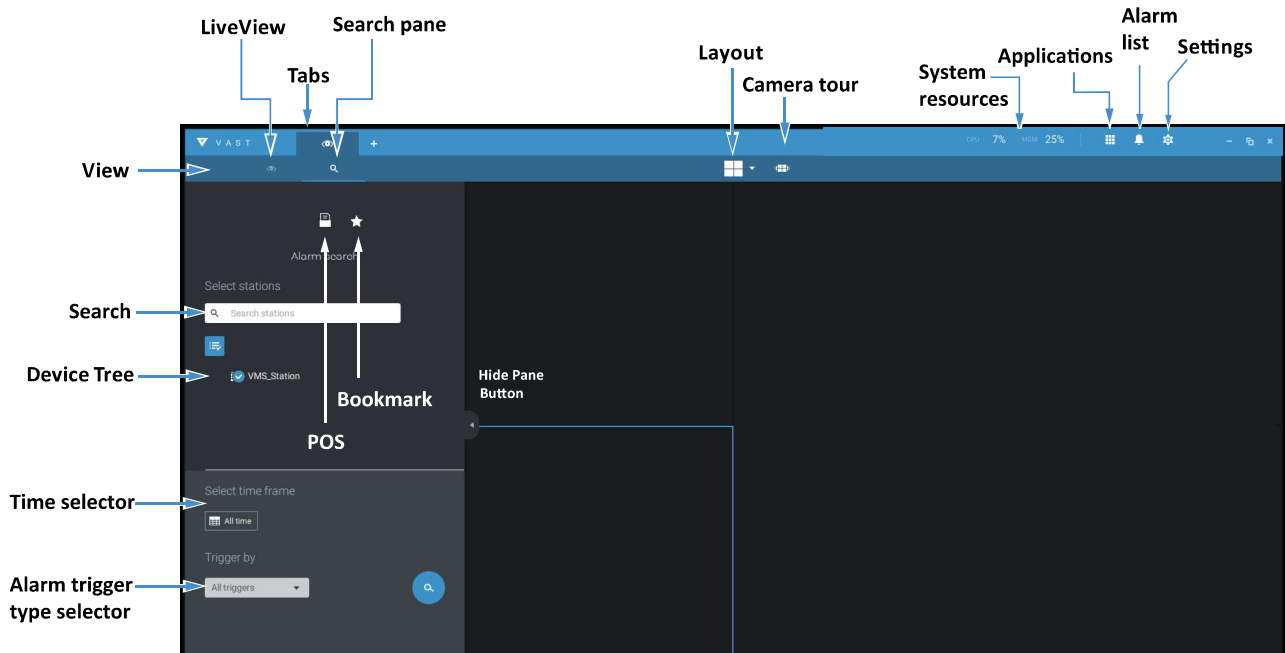
The basic screen elements of VAST live view, playback, and search pane are shown below:

### Live view

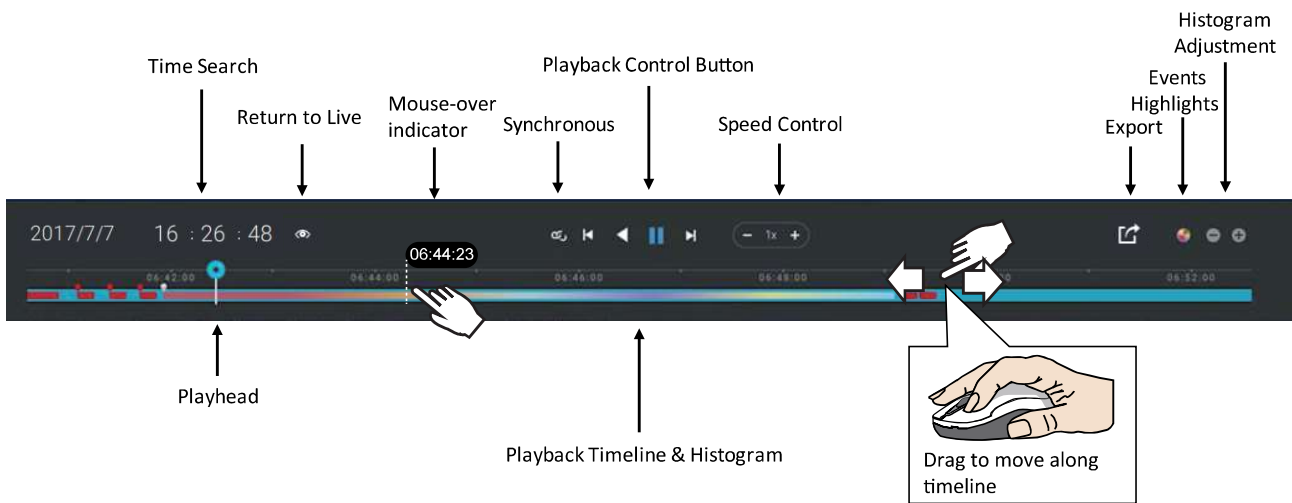


Playback is evoked when a view cell is selected, and you click the Playback button  on the upper right of the view cell.

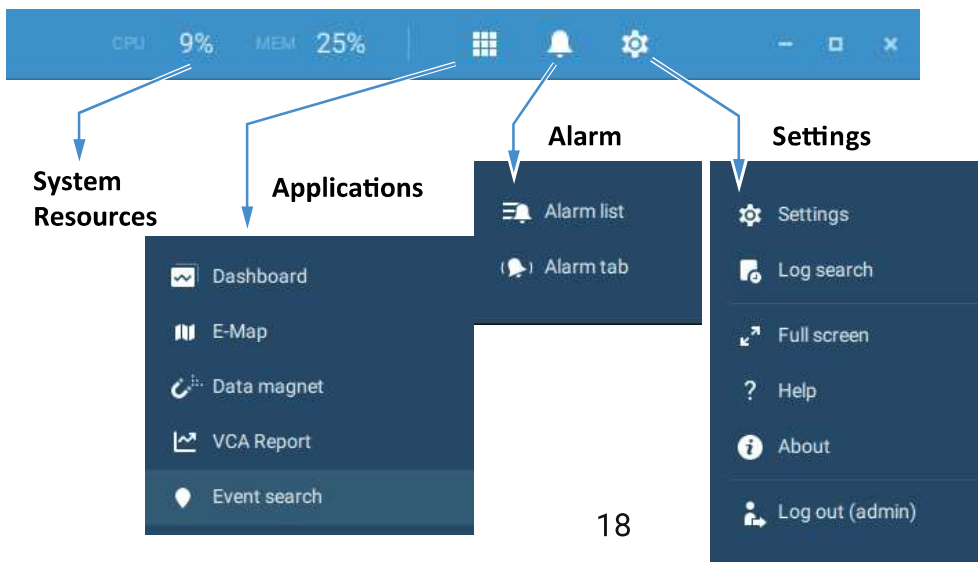
## Search Pane



## Playback Control

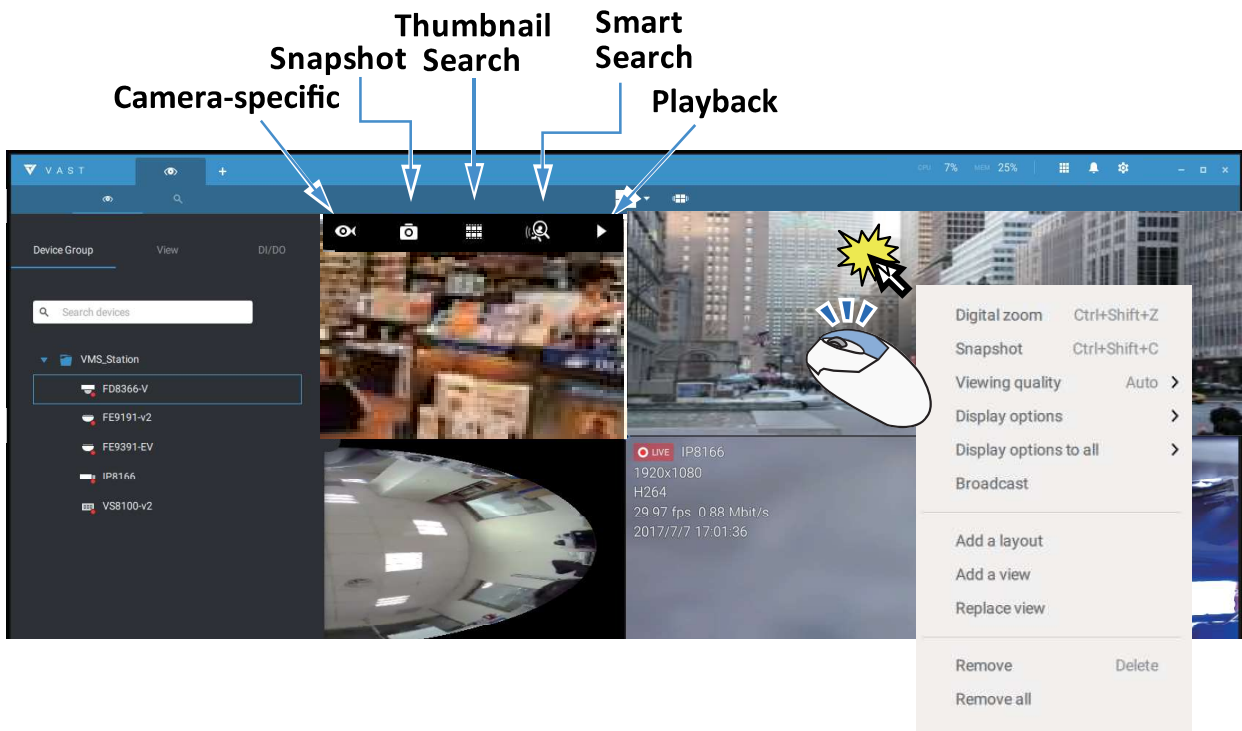


## Top Tool Bar



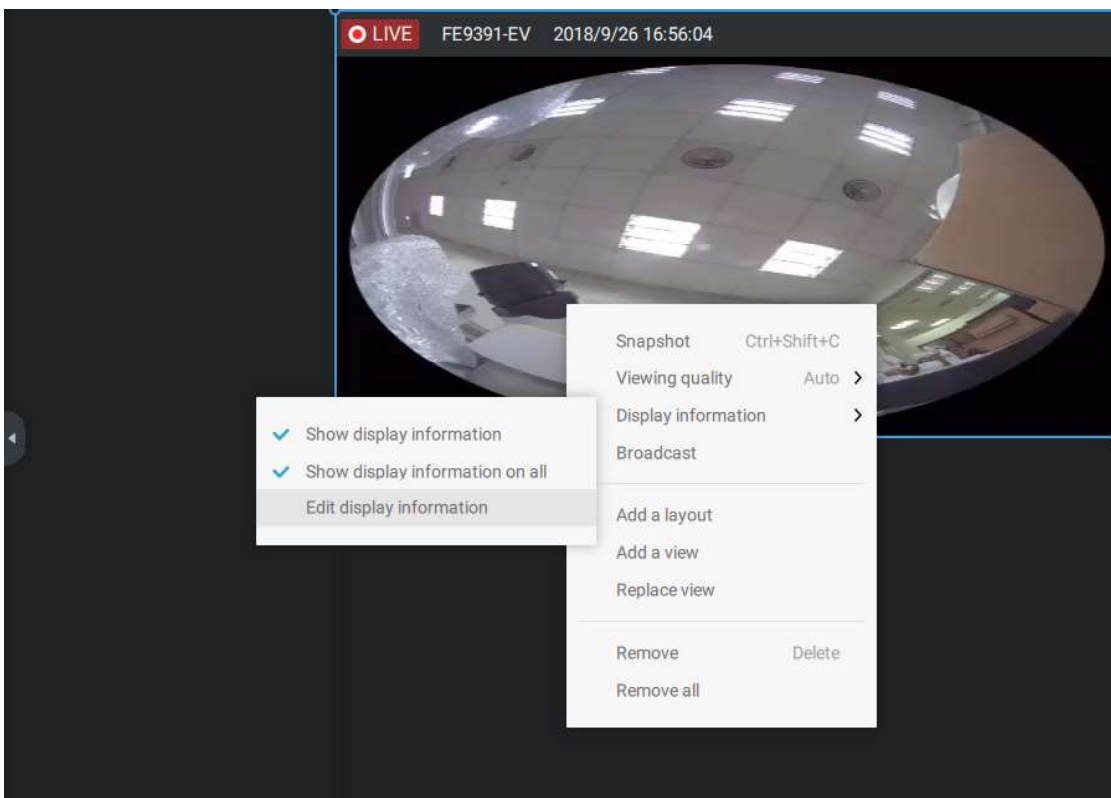
## View cell control

Some controls and functions are available when a view cell is selected or via the right-click menus.



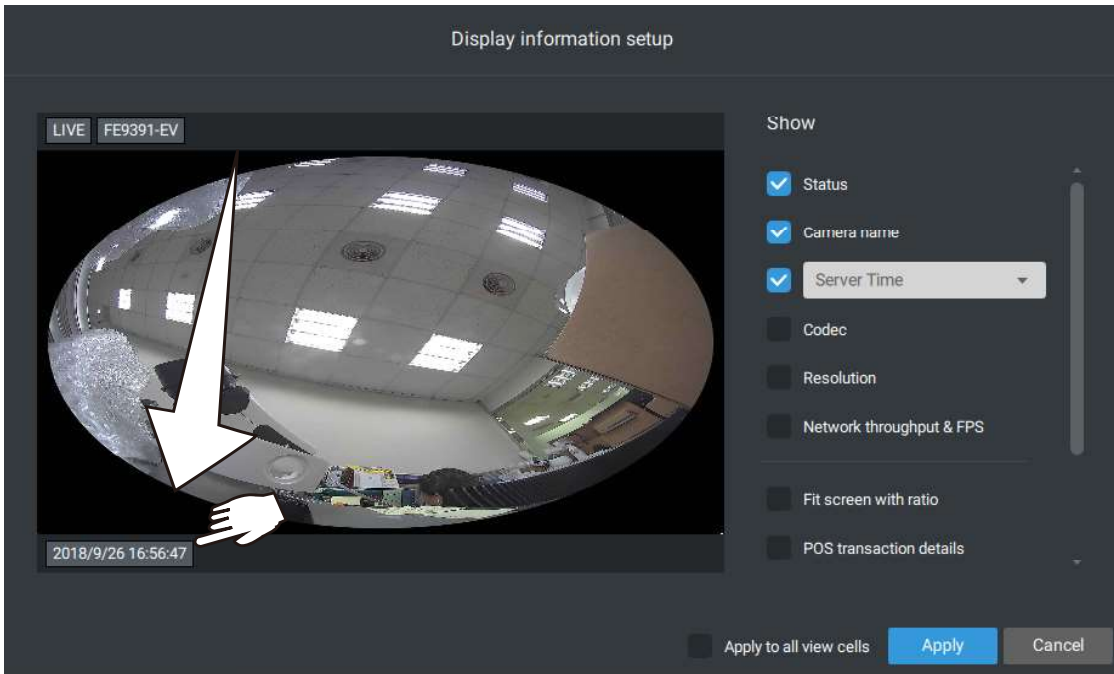
## Text overlay

Single-click to select a view cell, right-click and select Display information. The Edit display information tab will appear.



Select the checkboxes to determine what kind of text overlay will display on view cells. Note that you can place the overlay either on top or at the lower screen. Simply click and drag an overlay item to a preferred location. When done, click the Apply button.

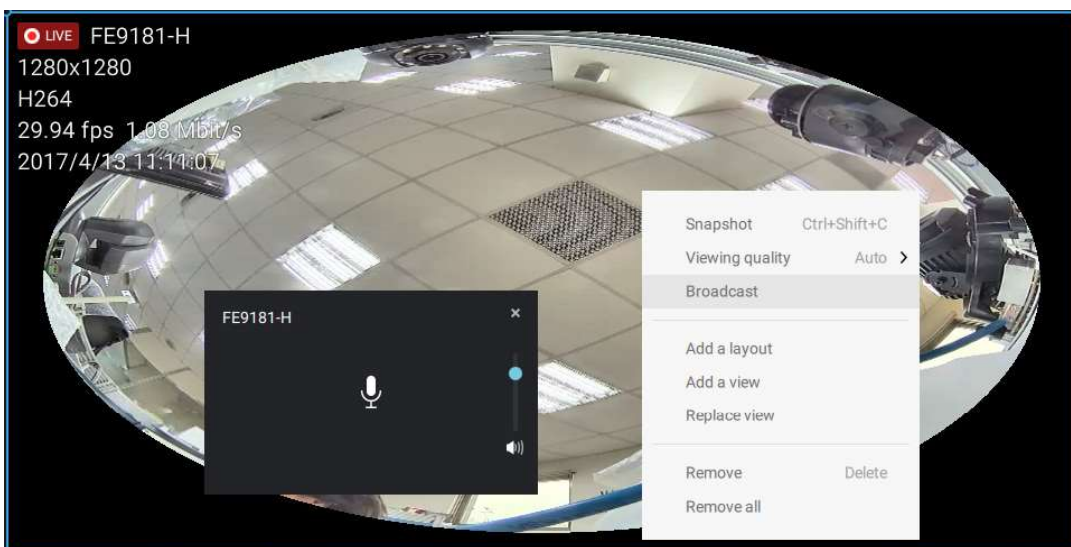
You can apply your current configuration to all view cells by selecting the **Apply to all view cells** checkbox. Note that you can also display the VCA rules and areas on screen.



## Two Way Audio

If your cameras support the Two Way Audio feature and the microphone and audio output to an amplified speakers have been connected, you can right-click on the camera to display the Broadcast function. Click on the Microphone icon in the middle to start speaking. Click again to stop the Two Way Audio.

Note that the Broadcast option only appears when you select a camera that supports the Two Way Audio feature. Currently the VAST2 software supports 1 to 1 broadcast.



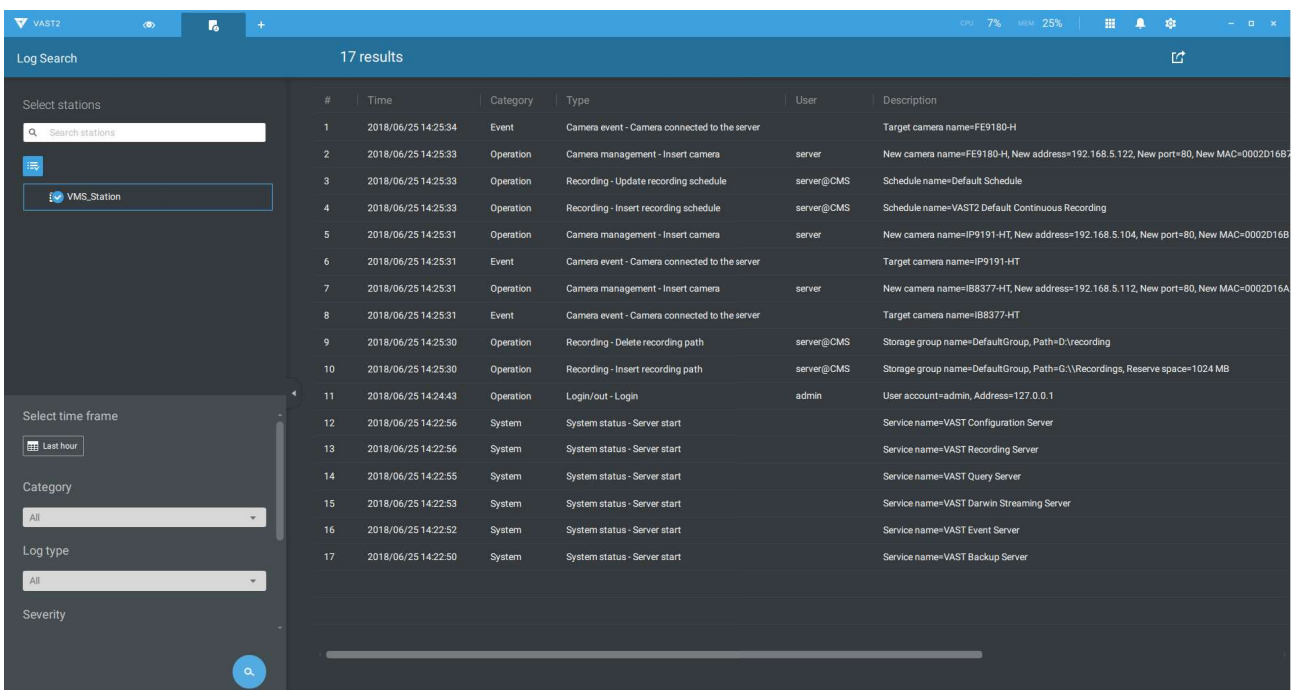
## Full Screen

The full screen function maximizes the display of view cells, concealing all other tool bar or navigation panels. To return to the normal view, press the **ESC** key on keyboard.

## Log Search

System logs can be found via the tool bar tab. All system events will be listed in the Log search panel. If you have multiple server, substations, select a server. You can search specific events by the event types (All triggers, camera, system/site, external devices), or by the time of occurrence using the calendar tool.

Use the Export button  to export the system log as an individual log file.

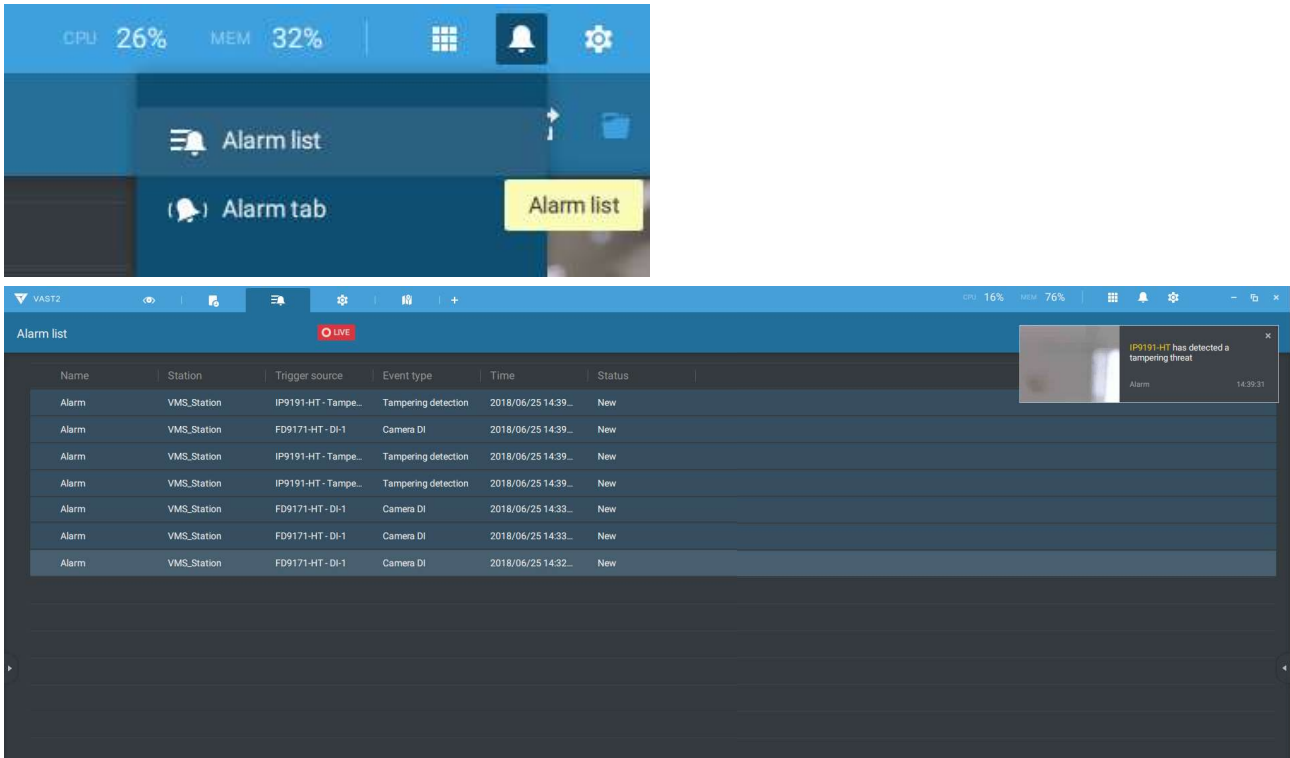


The screenshot displays the VAST2 Log Search interface. The top bar shows 'VAST2' and system status (CPU 7%, MEM 25%). The main area is titled 'Log Search' and shows '17 results'. On the left, there are filters for 'Select stations' (with 'VMS\_Station' selected), 'Select time frame' (set to 'Last hour'), 'Category' (set to 'All'), 'Log type' (set to 'All'), and 'Severity'. The main table lists 17 log entries with columns for #, Time, Category, Type, User, and Description.

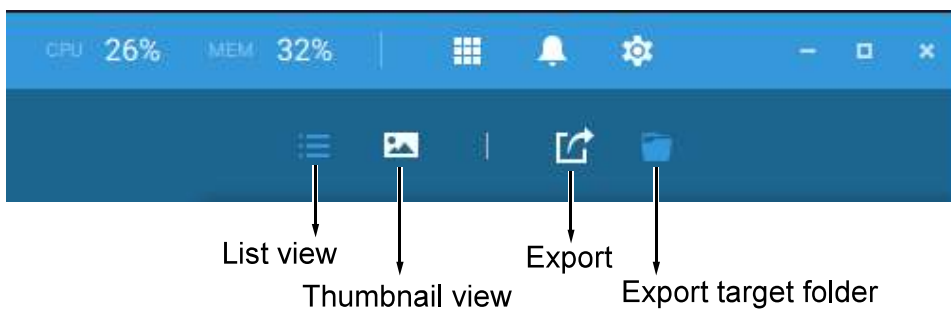
#	Time	Category	Type	User	Description
1	2018/06/25 14:25:34	Event	Camera event - Camera connected to the server		Target camera name=FE9180-H
2	2018/06/25 14:25:33	Operation	Camera management - Insert camera	server	New camera name=FE9180-H, New address=192.168.5.122, New port=80, New MAC=0002D16B...
3	2018/06/25 14:25:33	Operation	Recording - Update recording schedule	server@CMS	Schedule name=Default Schedule
4	2018/06/25 14:25:33	Operation	Recording - Insert recording schedule	server@CMS	Schedule name=VAST2.Default Continuous Recording
5	2018/06/25 14:25:31	Operation	Camera management - Insert camera	server	New camera name=IP9191-HT, New address=192.168.5.104, New port=80, New MAC=0002D16B...
6	2018/06/25 14:25:31	Event	Camera event - Camera connected to the server		Target camera name=IP9191-HT
7	2018/06/25 14:25:31	Operation	Camera management - Insert camera	server	New camera name=IB8377-HT, New address=192.168.5.112, New port=80, New MAC=0002D16A...
8	2018/06/25 14:25:31	Event	Camera event - Camera connected to the server		Target camera name=IB8377-HT
9	2018/06/25 14:25:30	Operation	Recording - Delete recording path	server@CMS	Storage group name=DefaultGroup, Path=D:\recording
10	2018/06/25 14:25:30	Operation	Recording - Insert recording path	server@CMS	Storage group name=DefaultGroup, Path=G:\Recordings, Reserve space=1024 MB
11	2018/06/25 14:24:43	Operation	Login/out - Login	admin	User account=admin, Address=127.0.0.1
12	2018/06/25 14:22:56	System	System status - Server start		Service name=VAST Configuration Server
13	2018/06/25 14:22:56	System	System status - Server start		Service name=VAST Recording Server
14	2018/06/25 14:22:55	System	System status - Server start		Service name=VAST Query Server
15	2018/06/25 14:22:53	System	System status - Server start		Service name=VAST Darwin Streaming Server
16	2018/06/25 14:22:52	System	System status - Server start		Service name=VAST Event Server
17	2018/06/25 14:22:50	System	System status - Server start		Service name=VAST Backup Server

## Alarm list

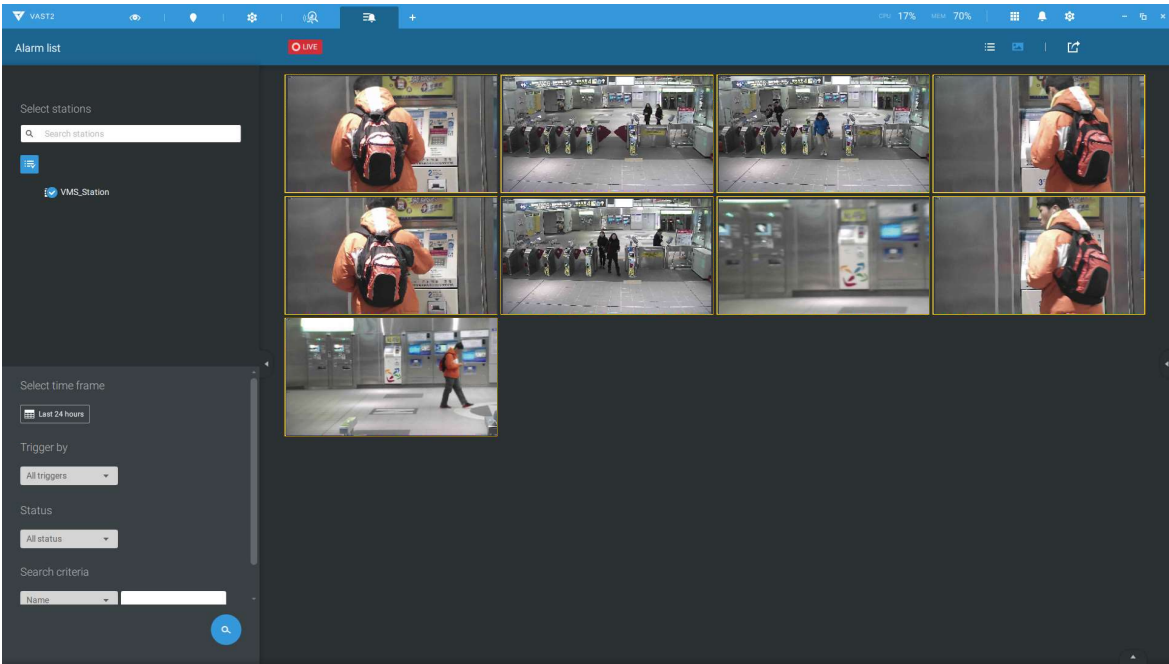
The Alarm list is accessed from the top tool bar. The Alarm list provides easy access to all triggered alarms, such as tampering alarms, alarms reported by VCA analytics, external devices connected via a camera's DI pin, etc.



The Alarm list can be displayed in either the List view or Thumbnail view.



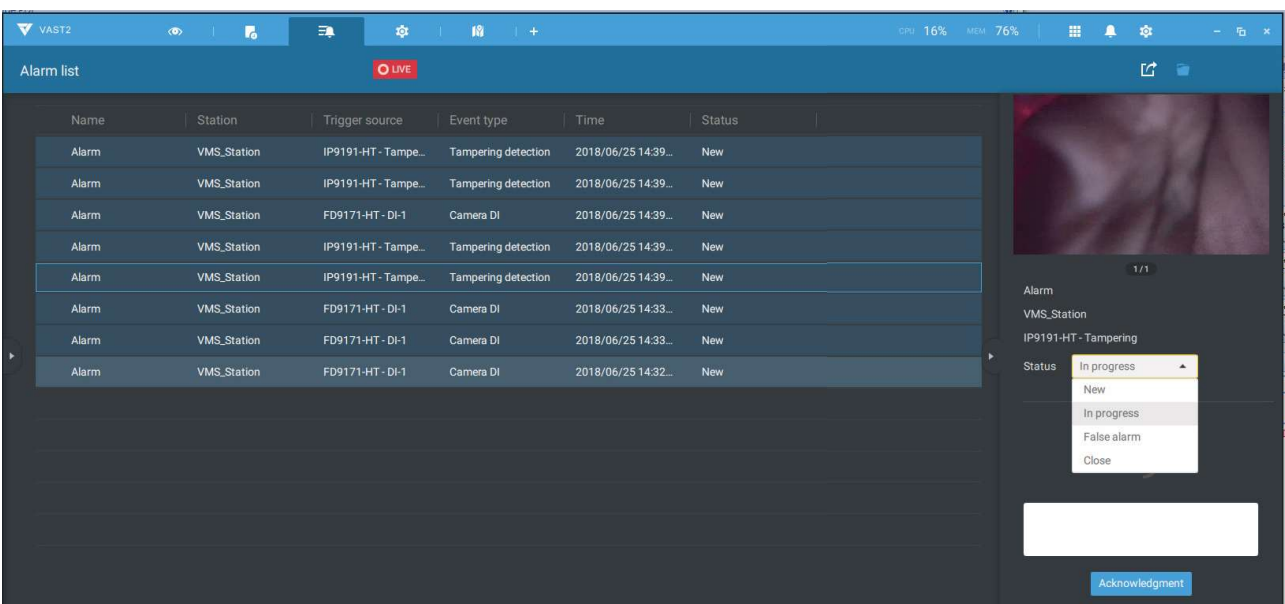
Below is an example of a Thumbnail view.



On the Alarm list, you can double-click to select a triggered alarm. A related snapshot and configuration panel will appear. An operator can select the Status menu to change the event management status. The configurable statuses can be:

1. **New**: An event that has not been handled.
2. **In progress**: Select to indicate that the event is being handled, e.g., a security personnel has been sent to verify the cause of the event.
3. **False alarm**: Used to indicate the event has been verified as a false alarm.
4. **Close**: A closed case event will be erased from the event list.

When done with designating event status, click the **Acknowledgment** button.

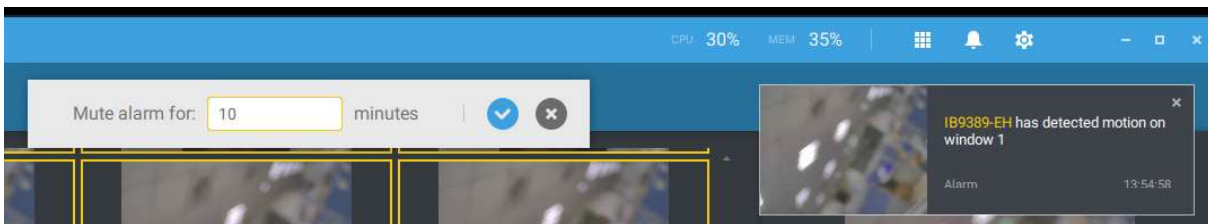




The Alarm list also supports Hot keys.

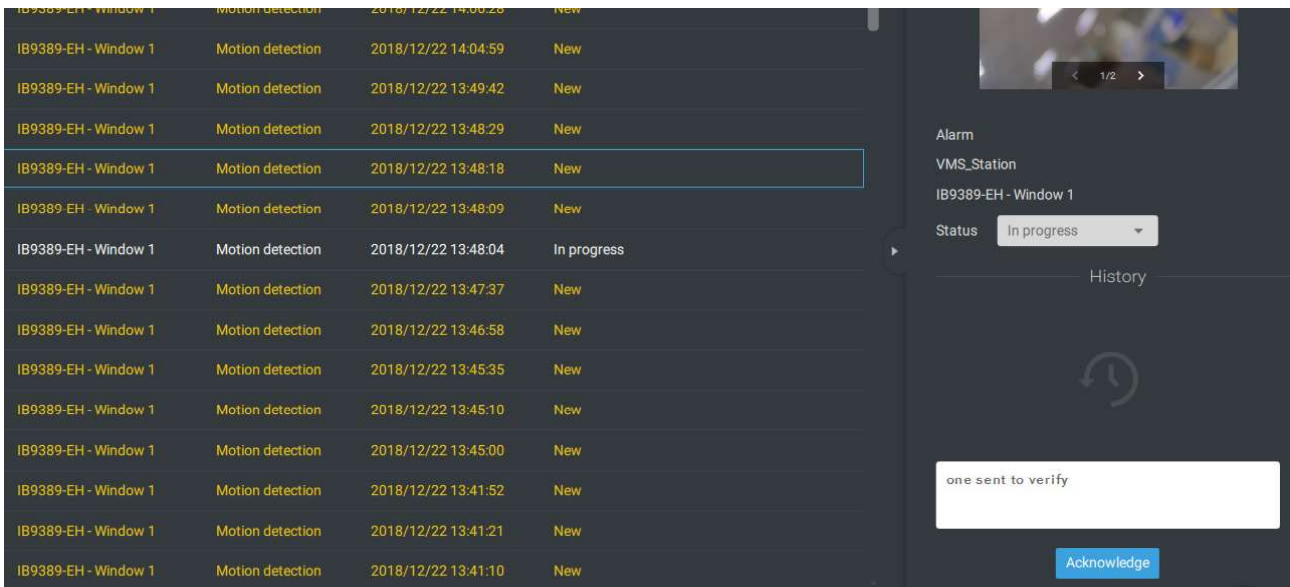
Alarm list window			
Mute the current alarm	Ctrl		m
Designate the selected alarms as false alarms	Ctrl		f
Select all alarms	Ctrl		a
Select one or multiple alarms	Ctrl		left mouse button
Select multiple alarms		Shift	left mouse button
Select different alarms			Up/Down/Left/Right

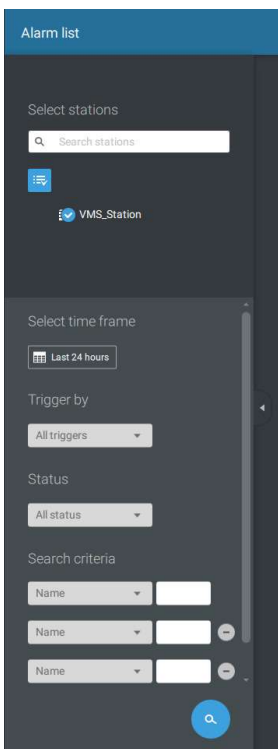
When an alarm is muted, a message will prompt asking for how long the alarm will be muted. Enter a number, and the alarm will disappear from the list temporarily.



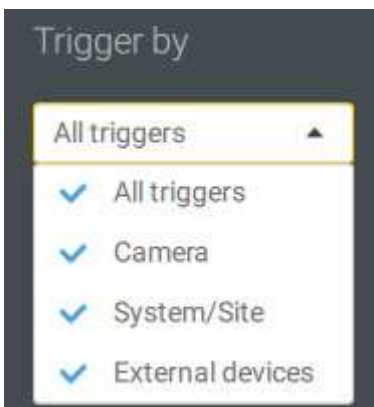
When an alarm is designated as a false alarm, it is immediately removed from the list.

When an alarm is designated as In progress, you can add a comment on the current condition, and click Acknowledge to change its status.

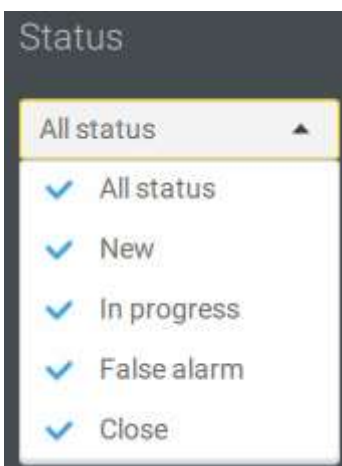




To find alarms of specific types, time of occurrences, and alarm status, click the side tab to reveal the search panel.




You can select the trigger source, e.g., when you need to see camera alarms only.



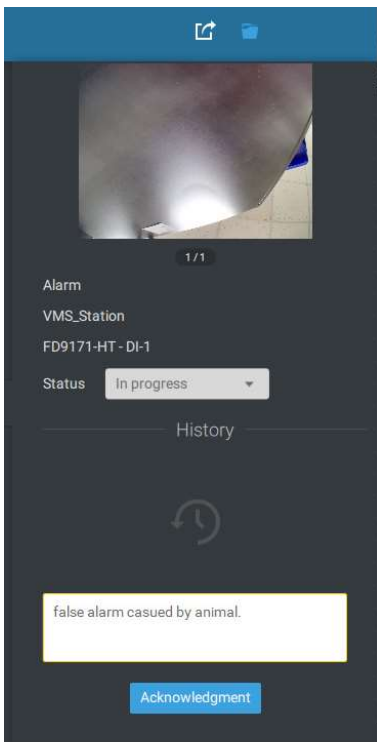
You can check to see alarms of a specific status. For example, you can select to search for the "In progress" alarms only.



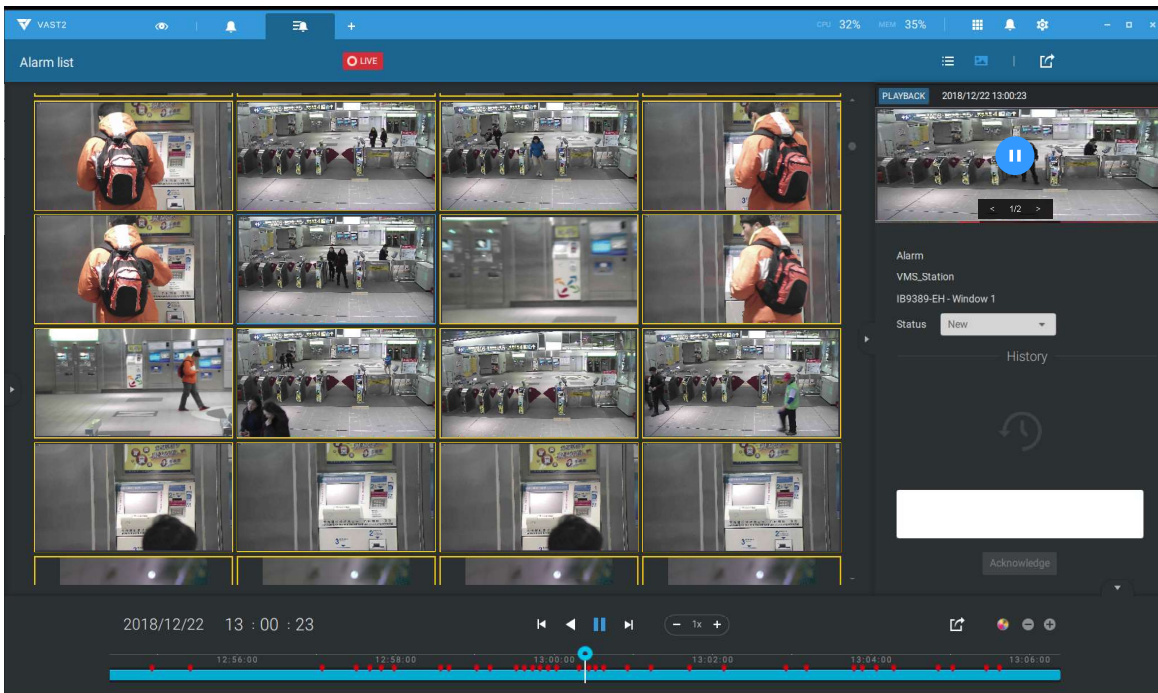
You can enter one or multiple keywords as the search criteria. For example, if you have an alarm named as "Alarm3-sidewalk," use the name as the keyword to search for the related alarms.

You can use the Export button  to export a full list of all triggered events into a CSV file. The event type, receiving station, triggering device, time of occurrence, and event status will all be listed

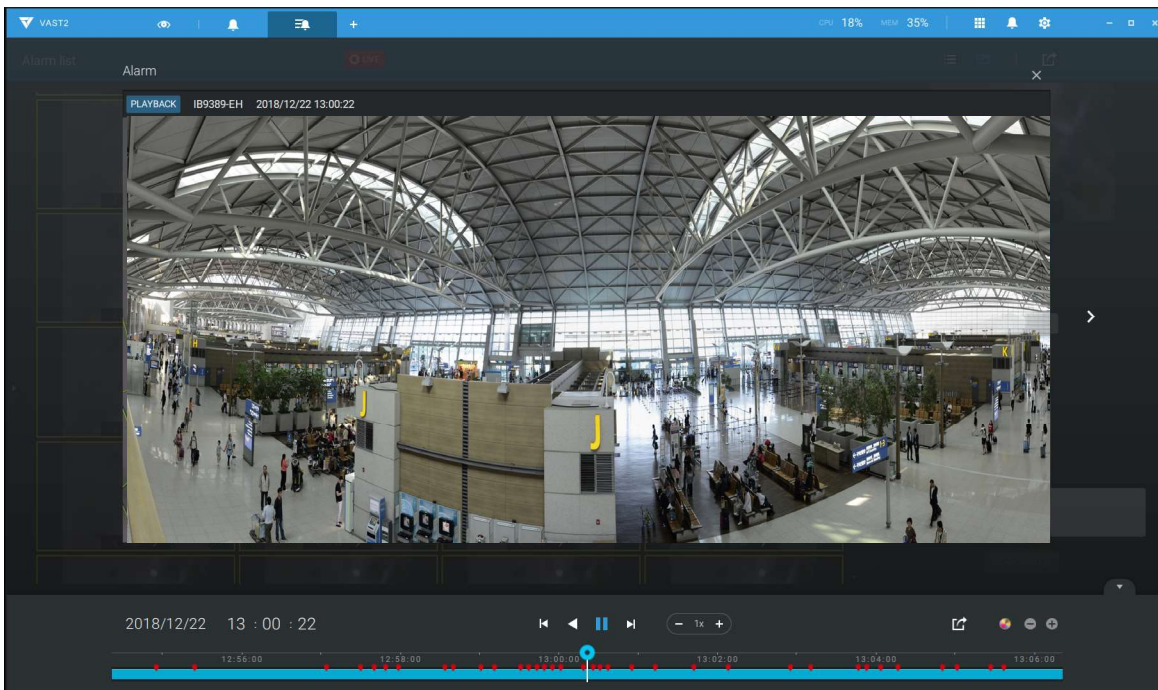
You can also add a comment for an event by entering the description in the comment entry field.



To review the alarm-related video, click to select an alarm, double-click to playback. The Playback window will appear on the upper right of the screen.

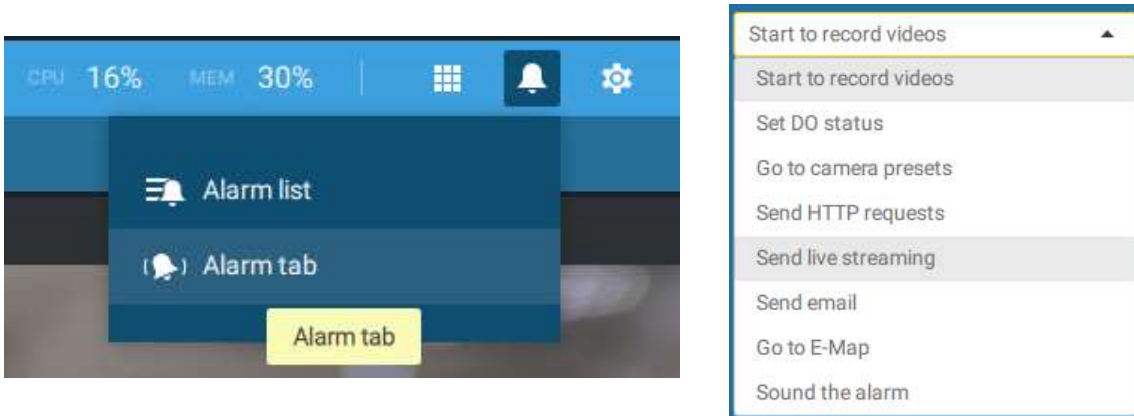


Double-click on the small playback screen again to bring it to the full view. The playback control, time line, export, and alarm tags will be available on screen.

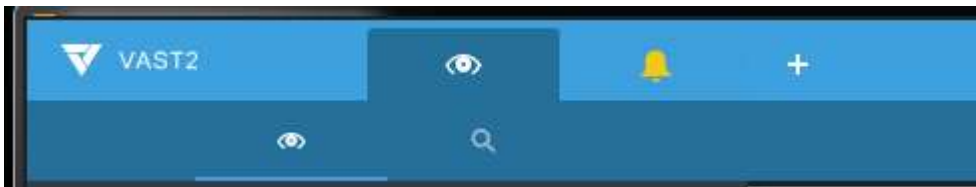


## Alarm tab

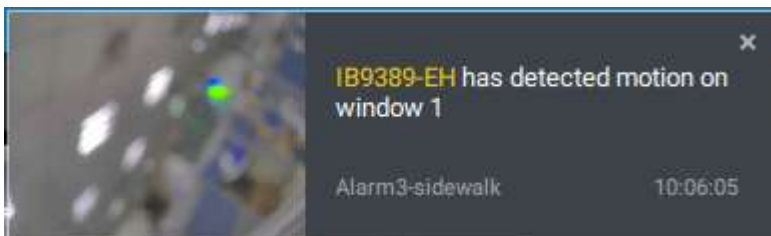
The Alarm tab is an automated streaming window displaying live videos by the triggered alarms. If you configure an alarm action as "Send live streaming," the alarm streaming will be displayed in this window. Note that this window does not display other alarms.



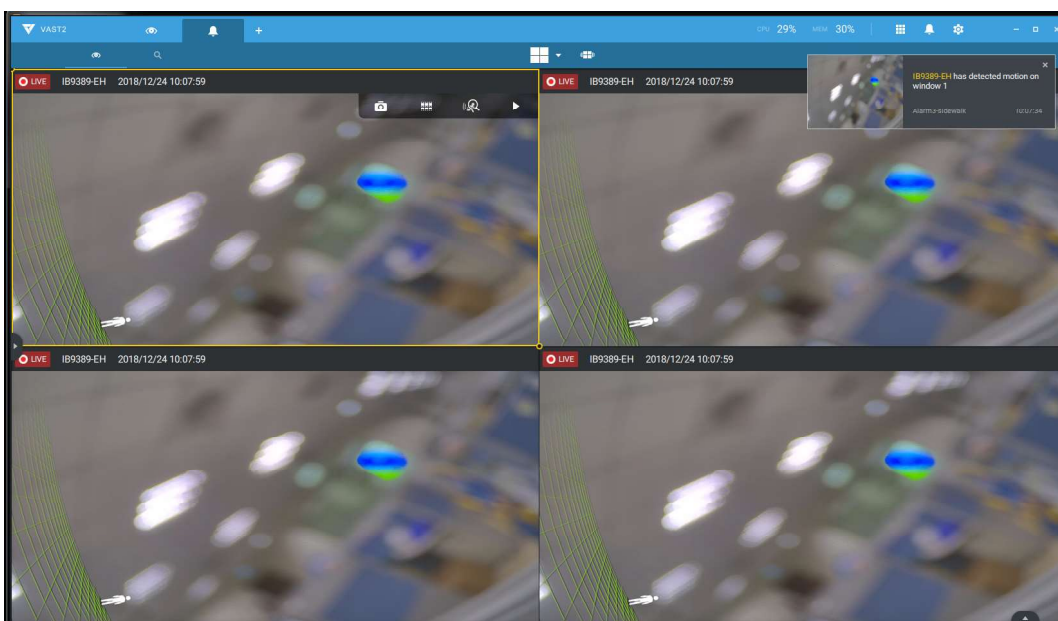
When a live streaming is sent by an alarm, an orange ringing bell icon will display.



An alarm prompt will also display on the screen.



You can click on the ringing bell icon to open the Alarm tab window. The alarm-triggered streamings will be available on screen.



# Hot Keys

Open online document			F1
Close current tab	Ctrl		W
<b>View cell</b>			
Select view cell			Arrow keys
Digital zoom	Ctrl	Shift	Z
Snapshot	Ctrl	Shift	C
Instant bookmark	Ctrl	Shift	B
Remove camera from cell			Del
Move to preset position	Ctrl		Digits (1,2,3,...)
PTZ model up, down, left, right			Arrow keys
Save current layout as a customized layout	Ctrl		S
Undo layout modification	Ctrl		Z
Redo layout modification	Ctrl		Y
<b>Timeline</b>			
Sync Playback mode	Ctrl	Shift	S
Play/Rewind			Space
Pause			Space
Play	Ctrl		Arrow right
Rewind	Ctrl		Arrow left
Speed up	Ctrl		Up
Speed down	Ctrl		Down
Next frame	Ctrl	Shift	Arrow right
Previous frame	Ctrl	Shift	Arrow left
Reset speed to 1x	Ctrl		1 (one)
<b>Smart search</b>			
<b>- Configuration page</b>			
Delete detection range			Esc/Del
Close smart search			Esc
<b>- Result page</b>			
Close smart search			Esc
Select a result			Arrow keys
Play selected result			Enter
Back to result page			Esc
Next result			Arrow right
Previous result			Arrow left

<b>Bookmark search</b>			
Close bookmark search			Esc
Select more bookmarks	Ctrl		Click
Select more bookmarks		Shift	Click
Select bookmarks			Arrow keys
Delete selected bookmarks			Del
Play a selected bookmark			Enter
Back to bookmark page			Esc
Next bookmark			Arrow right
Previous bookmark			Arrow left
<b>Thumbnail search</b>			
Close Thumbnail search			Esc
Select thumbnail			Arrow keys
Play a selected thumbnail			Enter
Back to Thumbnail page			Esc
Next Thumbnail			Arrow right
Previous Thumbnail			Arrow left
<b>Emap Setup</b>			
- Google map			
Remove selected GPS			Del
<b>DI/DO Device Settings</b>			
Remove selected external I/O device			Del
<b>SMTP Settings</b>			
Remove selected SMTP server			Del
<b>Camera Management</b>			
Rename selected camera			F2
Rename selected folder			F2
Remove selected camera from system			Del
<b>Sites Management</b>			
Rename selected site			F2
Remove selected site from system			Del
<b>Users Settings</b>			
Remove selected user			Del
<b>Schedule Settings</b>			
Remove scheduled time frame			Del

<b>Data Magnet</b>			
Move selected row			Up / Down
Show detail of selected row			Enter
<b>View management</b>			
Rename selected view			F2
Delete selected view			Del
<b>Alarm management</b>			
Delete selected alarm			Del
<b>Alarm list window</b>			
Mute the current alarm	Ctrl		m
Designate the selected alarms as false alarms	Ctrl		f
Select all alarms	Ctrl		a
Select one or multiple alarms	Ctrl		left mouse button
Select multiple alarms		Shift	left mouse button
Select different alarms			Up/Down/Left/Right



**For a client running on MAC:**

<b>View cell</b>			
Select view cell			Arrow keys
Digital zoom	Command ⌘	Shift	Z
Snapshot	Command ⌘	Shift	C
Instant bookmark	Command ⌘	Shift	B
Remove camera from cell			Delete
<b>Timeline</b>			
Sync Playback mode	Command ⌘	Shift	S
Play/Pause			Space
Rewind/Pause			Space
Play	Command ⌘		Arrow right
Rewind	Command ⌘		Arrow left
Speed up	Command ⌘		Up
Speed down	Command ⌘		Down
<b>Smart search</b>			
<b>- Configuration page</b>			
Delete detection range			Esc/Del
<b>- Result page</b>			
Back to result page			Esc
Next result			Arrow right
Previous result			Arrow left


<b>Data Magnet</b>			
Search result table			
Next result			Arrow down
Previous result			Arrow up
Play selected result			Enter

<b>License management</b>				
Show/hide the entry in online license management	Command ⌘	Shift	Option (or Alt)	V
<b>Purchase license table</b>				
Switch between license status and amount of license	Command ⌘	Shift	Option (or Alt)	L

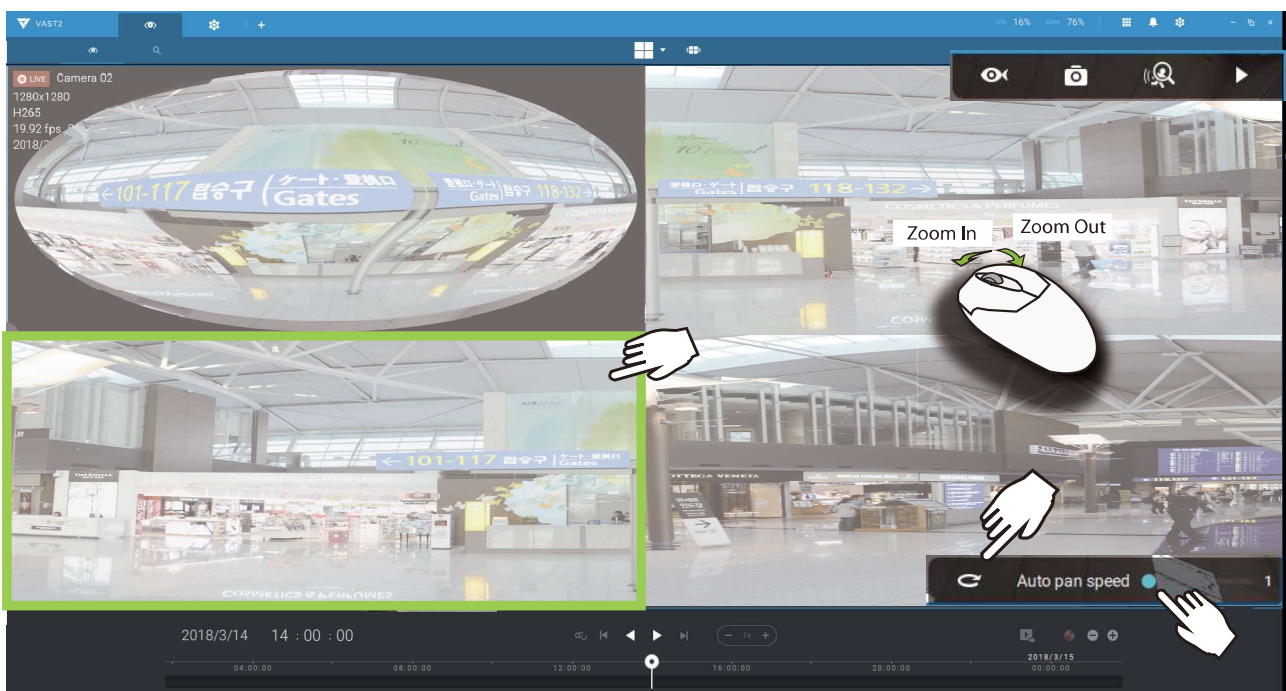
# View Cell Elements


On a view cell, the control elements are different with different types of network cameras. 3 major types are listed below with applicable screen elements:


1. **Fixed** cameras:  Snapshot - Thumbnail search - Smart search - Replay.

2. **Fisheye** cameras:  Fisheye display mode - Snapshot - Thumbnail search - Smart search - Replay.

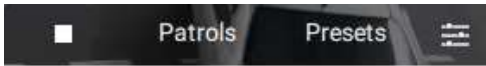
The Auto pan function applies only to the Regional views. Select a regional view, and click the Auto pan button. The Regional view will pan from side to side to cover more viewable regions. If a fisheye is mounted on wall, a regional view with auto pan can cover a panoramic view region.



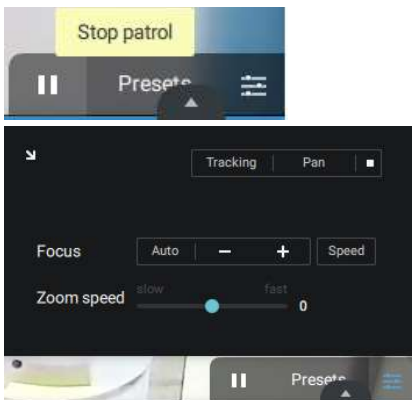
3. **PTZ cameras:**  PTZ - Snapshot - Thumbnail search - Smart search - Replay. For information about PTZ control, refer to the discussion on PTZ on page 69.

To exert PTZ control, first click on this button  to enable PTZ control.

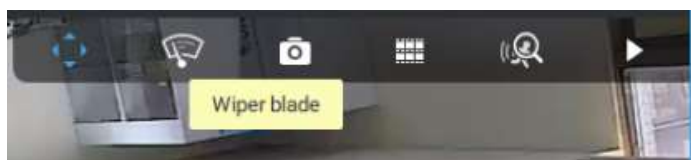
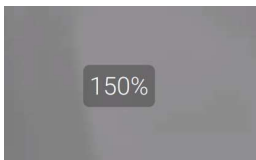
When PTZ control is enabled, the following controls are available on screen:



Click Patrols or Presets if these have been configured on the PTZ camera. You will need to open a web console with the camera to do so.



The PTZ settings tab allows you to enable PTZ Tracking and the Pan functions. You can also adjust the Zoom and Focus speed, or manually adjust the focus. Please refer to the camera User Manual for more information about these functions.



For speed dome cameras that comes with wiper blade, the wiper blade control button will be available on the tool bar.

You can use the mouse wheel to zoom in or zoom out on the screen. The zoom ratio is shown on screen for half a second.



When PTZ is enabled, the zoom buttons and a home button are displayed on the right hand side of the view cell.

For more information about Snapshot, Thumbnail search, and the Replay functions, please refer to their specific help pages.